



Penrallt Bungalow

Barmouth | Merionethshire | LL42 1TB

£895,000

MONOPOLY[®]

BUY ■ SELL ■ RENT



Penrallt Bungalow

Barmouth | Merionethshire | LL42 1TB

Ultimate waterfront location and unsurpassed views, this property will capture the heart of all who view. Every requirement is met with this ideal combination of exceptional location and views mixed with perfect living and entertainment spaces and a property that truly captures the essence of coastal life.

This remarkable house is not just a home; it is a front row seat to the breathtaking beauty of the Mawddach Estuary, Cadair mountain ranges and the iconic Barmouth bridge.

The beautifully presented property boasts three spacious bedrooms and three well-appointed bathrooms, making it ideal for families or those who enjoy hosting guests. The large detached double garage and parking provides ample space for vehicles and additional storage, while the surrounding gardens offer a serene outdoor retreat.

One of the standout features of this home is the two large glazed composite balconies, which provide the perfect vantage point to soak in the stunning vistas of the sea and surrounding landscape. Imagine sipping your morning coffee or enjoying an evening glass of wine while taking in the beauty of the coastline.

Additionally, this property grants direct access to a "secret" beach for fun-filled adventures by the water. The vibrant Barmouth harbour and high street are just a short walk away, offering a delightful array of shops, cafes, and local amenities.

Whether you are seeking a permanent residence, exclusive holiday let opportunity or private holiday retreat, this property is sure to impress. Do not miss the opportunity to make this stunning seaside haven your own.

- ULTIMATE WATERFRONT - uninterrupted sea, estuary and mountain views
- SPACIOUS ACCOMMODATION - 3 king sized bedrooms (one ensuite), 3 bathrooms
- GLAZED BALCONIES - 2 composite balconies on 2 levels with exceptional views
- ACCESS TO SECRET BEACH - exclusive footpath at bottom of garden leads to small cove/beach and water access
- FREESTANDING BATHS - in all of the well appointed bathrooms
- DOUBLE GARAGE AND PARKING - detached garage & parking for up to four cars
- LANDSCAPED GARDENS - Lawns, rockeries, flower borders and a selection of fruit trees
- WALKING DISTANCE OF BUSTLING RESORT - harbour, high street, bus stops, train station, & public footpaths close by
- PRESTIGIOUS LOCATION - front row seat to breathtaking Mawddach estuary, Cardigan Bay and Cader Idris
- IDEAL COASTAL HOME, HOLIDAY LET OR PRIVATE HOLIDAY RETREAT



Ground Floor

The entrance hall opens to the ground floor accommodation consisting of the spacious living room, dining kitchen, cloakroom/WC and a large wrap around glazed balcony. Stairs rise to the first floor and lead down to the lower ground floor.

Living Room

24'6" x 16'8" (7.47 x 5.09)

Dominating this large light filled room is the dual aspect with two large picture windows having views across the Mawddach estuary to Cader Idris and Barmouth Bridge. A door opens to the composite balcony with glass balustrade.

Dining Kitchen

16'4" x 11'3" (5 x 3.45)

With sensational views and bay window with French doors opening to the balcony, catering will be a joy in this well equipped kitchen perfectly located for entertaining and al fresco dining. There is a range of contemporary wall and base units with tiled splashbacks, integrated appliances include Neff double oven with gas hob, Neff warming shelf and extractor over and fridge freezer.

Space for a large dining table and chairs.

Cloak Room

4'6" x 3'11" (1.38 x 1.21)

With tiled floor and walls, low level WC, hand basin and obscure window.

Ground Floor Balcony

A large composite balcony with glazed balustrade to maximise the incredible views. The balcony wraps round to the side of the house and has access from the kitchen, lounge and entrance hall. With ample space for dining table, chairs and sun loungers.

Lower Ground Floor

On this floor are two bedrooms, two bathrooms, a utility area and the second glazed balcony which is covered for all weather use.

Principal Bedroom

15'1" x 11'2" (4.6 x 3.42)

This king sized bedroom benefits from private patio door access to the balcony and enjoys the incredible views. A side window looks over the garden towards Cader Idris.

Bathroom to Principal Bedroom

8'0" x 6'6" (2.46 x 2)

Adjacent is a large bathroom with jet bath and shower over, hand basin and low level WC with fitted bathroom furniture. Tiled floor, heated towel rail and obscure window. A door opens to a utility cupboard where there is space and plumbing for a washing machine, tumble dryer and the central heating boiler.

Bedroom 2 Suite

11'9" x 11'3" (3.6 x 3.45)

A door from the hallway opens to a small lobby with access to Bedroom 2, a bathroom and large understairs cupboard. The king sized bedroom enjoys harbour bridge, sea and estuary views.

En-Suite Bathroom Bedroom 2

11'5" x 7'2" (3.50 x 2.20)

Spacious and well appointed with feature freestanding bath, quadrant shower, low level WC, hand basin, heated towel rail and window to the garden. Fully tiled walls and floor.

Lower Ground Floor Balcony

With covered ceiling allowing enjoyment whatever the weather, with composite decking and slate slabs and glass balustrade.





First Floor

Spanning the whole of this floor is a suite comprising of a king sized bedroom with walk in wardrobe and spacious bathroom with unique alcove features in both bedroom and bathroom.

Bedroom 3

13'8" x 11'0" (4.19 x 3.37)

The third king sized bedroom enjoys estuary and Cader Idris views from the window to the side. A roof light window provides attractive views of the rock face.

Alcove Bedroom 3

6'2" x 5'10" (1.9 x 1.8)

A little alcove with feature obscure window!

Bathroom 3

11'5" x 10'5" (3.5 x 3.2)

With freestanding bath, tiled walls, low level WC , hand basin and heated towel rail. Sea and garden views from the window to the side.

Bathroom Alcove

11'5" x 10'5" (3.5 x 3.2)

With round window and bridge view.

Detached Garage and Parking

The property benefits from a large detached double garage plus parking for for up to four cars and is located a 30 second walk from the property. There is power supplied by solar panels and a water supply.

Gardens

The landscaped gardens are a delight. They are terraced, spanning three sides and facing the coast. There are lawns, bushes and shrubs, feature stone walls and paths meandering through. With a variety of fruit trees including fig, pear, apple, plum and cherry and wild strawberries.

Beach and Waterfront Access

A right of way over "waterway " land leads to a gate and path to a "secret beach", sandy on low tides and giving direct access to the water for fishing, swimming, stand up paddle boarding and canoeing etc. Moorings are available close to the house with a slip way access at Aberamffra Harbour about 200yards away.

Additional Information

The property is freehold and benefits from mains electricity, water and gas. It is fully double glazed. Drainage is private to septic tank.

Fast internet speed of 900mbs.

Barmouth and its Surrounds

Lying between the mountain range of Cadair Idris and the sea. Barmouth is known as the town where 'the Mountains meet the Sea' but offers much more than that. It is a thriving seaside town with breathtaking views on the north west coast of Wales looking out onto Cardigan Bay on the edge of the Snowdonia National Park. There is a bustling town centre with a range of shops and supermarkets and great places to eat and relax. For lovers of the outdoors it offers walking, cycling, paddle-boarding, kayaking, and of course swimming in the sea from the beautiful golden sand beach. The train station in the middle of the town provides easy links up and down the coastal line or regular trains directly through to Birmingham and beyond.

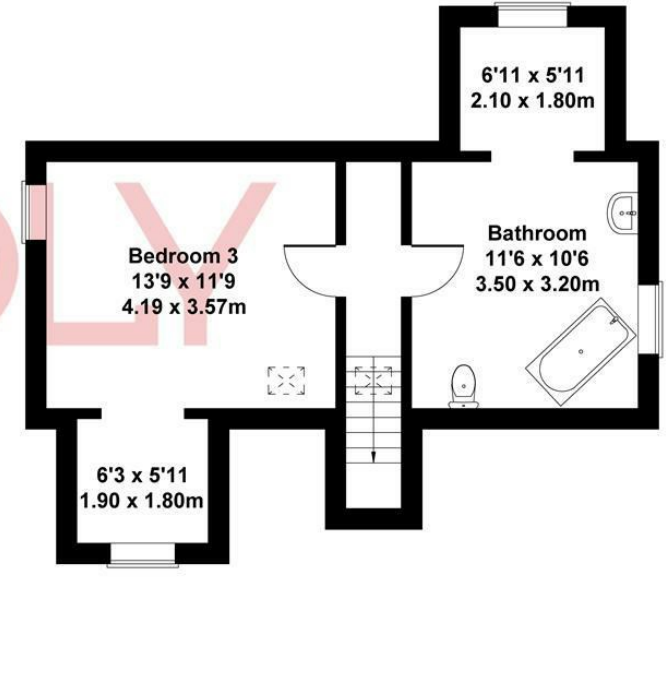
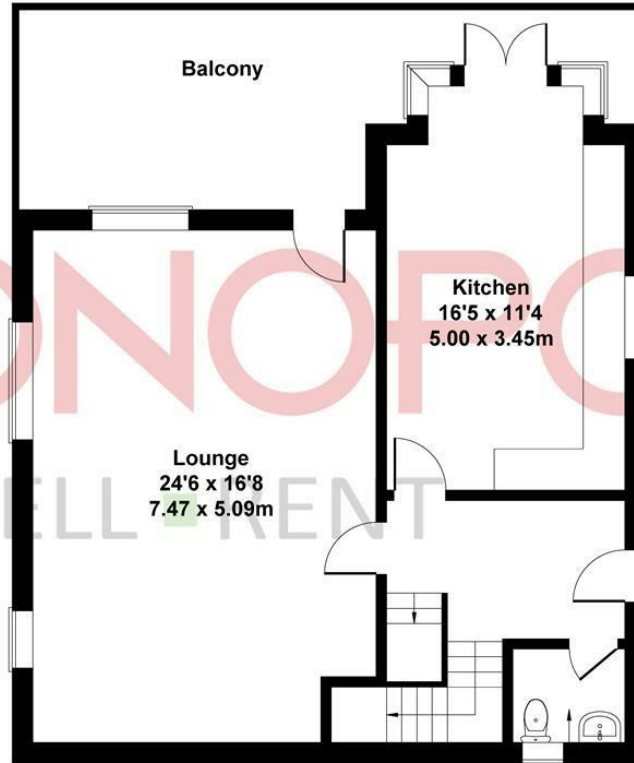
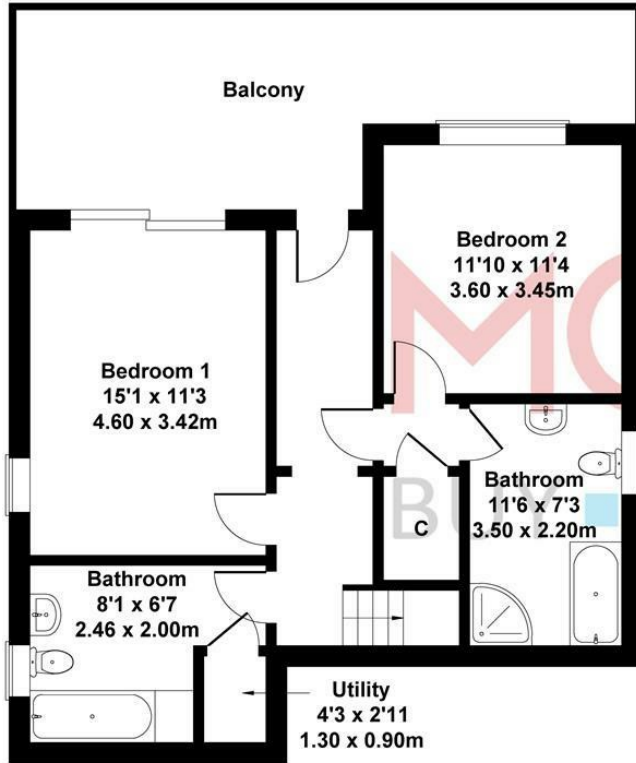






Penrhall Bungalow

Approximate Gross Internal Area
1830 sq ft - 170 sq m



Not Drawn to Scale, For Illustrative Purposes Only.

MONEY LAUNDERING REGULATIONS 2003

intending purchasers will be asked to produce identification and proof of financial status when an offer is received. We would ask for your co-operation in order that there will be no delay in agreeing the sale.

THE PROPERTY MISDESCRIPTIONS ACT 1991

The Agent has not tested any apparatus, equipment, fixtures and fittings or services and so cannot verify that they are in working order or fit for the purpose. A Buyer is advised to obtain verification from their Solicitor or Surveyor. References to the Tenure of a Property are based on information supplied by the Seller. The Agent has not had sight of the title documents. A Buyer is advised to obtain verification from their Solicitor. You are advised to check the availability of this property before travelling any distance to view. We have taken every precaution to ensure that these details are accurate and not misleading. If there is any point which is of particular importance to you, please contact us and we will provide any information you require. This is advisable, particularly if you intend to travel some distance to view the property. The mention of any appliances and services within these details does not imply that they are in full and efficient working order. These particulars are in draft form awaiting Vendors confirmation of their accuracy. These details must therefore be taken as a guide only and approved details should be requested from the agents.

Energy Efficiency Rating			Environmental Impact (CO ₂) Rating		
Very energy efficient - lower running costs	Current	Target	Very environmentally friendly - lower CO ₂ emissions	Current	Target
92-95% A			10-15% A		
81-91% B			16-20% B		
69-80% C			21-25% C		
55-68% D			26-30% D		
39-54% E			31-35% E		
21-38% F			36-40% F		
1-20% G			41-45% G		
Not energy efficient - higher running costs			Not environmentally friendly - higher CO ₂ emissions		
England & Wales	EU Directive 2002/91/EC		England & Wales	EU Directive 2002/91/EC	







1A Tyn Celyn, Sam Hir, Llanbedr, LL45 2HS
01341 475000 | gwynedd@monopolybuysellrent.co.uk
www.monopolybuysellrent.co.uk

MONOPOLY
BUY ■ SELL ■ RENT